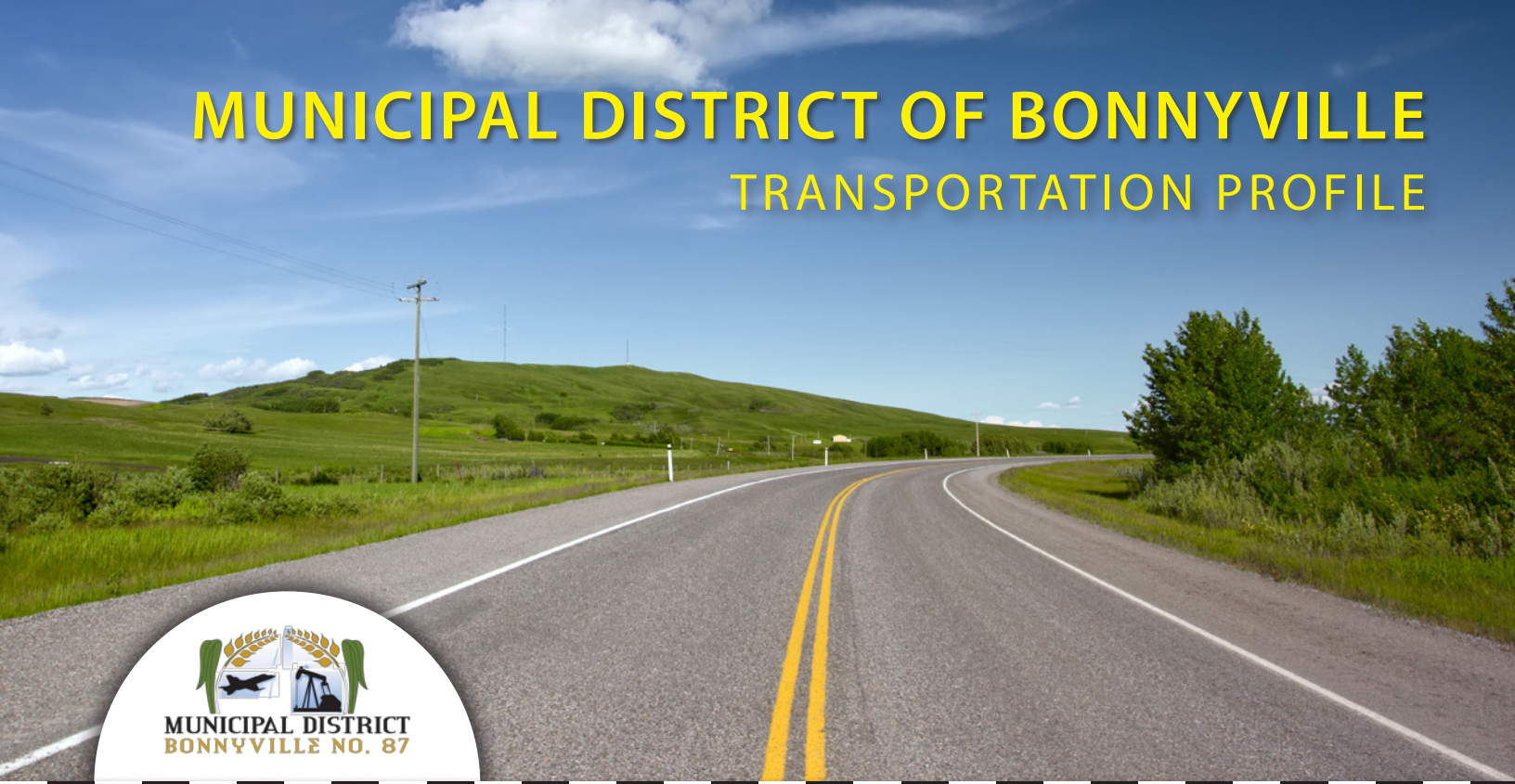


MUNICIPAL DISTRICT OF BONNYVILLE

TRANSPORTATION PROFILE



A great location!



The M.D. of Bonnyville, an economically robust District, encompasses a large portion of northeastern Alberta. The M.D. of Bonnyville consists of over 1,000,000 acres of farmland and large expanses of natural parkland and lakes. Strengthened by the resource industries of agriculture, oil & gas, and forestry, as well as the military and aerospace industries located at the Cold

Lake Air Force Base, the M.D. is one of the largest and most diversely developed rural districts in Alberta.

The M.D. of Bonnyville is well served with a network of quality transportation systems. The transportation infrastructure in the municipality is a major factor in supporting the primary industries in the region including the oil and gas industry, as well as the military and aerospace industries that are so prevalent in the region. Our integrated highway, rail and air systems allow for efficient delivery and transport of goods and people throughout the communities in the M.D. of Bonnyville.

Cities
Cold Lake

Towns
Bonnyville

Villages
Glendon

Hamlets
Ardmore
Beaver Crossing
Beaver Dam
Cherry Grove
Fort Kent
La Corey
Therien



Alberta HUB
Where opportunity comes to life

Highways



The M.D. of Bonnyville has a well-established network of primary highways (372 km), secondary highways (493 km) and local roads (2757 km), within its boundaries. One of the major east-west highways traversing central Alberta, provincial Highway 28, travels directly through the district. Highway 28 is a high load corridor and the main highway for travel and transport between the cities of Edmonton and Cold Lake and its adjacent Royal Canadian Air Force Base. Another primary highway vital to the Alberta economy, Highway 41, a high load corridor, travels north-south through the district and is a major route for industry. In addition, Highway 55 is a major central corridor that provides direct access to the South Athabasca Oil sands in north central Alberta. Secondary Highways 881, 892 and 897 run north and south intersecting with Primary Highways 28 and 55 connecting numerous communities and industrial sites throughout the region.

Well Maintained Network

The municipality has almost 3,000 km of road network connected to Highways 28, 55, 41, 660, 659, 881, 892 and 897. M.D. Council, in partnership with industry, has made a commitment to continually upgrade all the major roadways to accommodate industry and residential traffic. All primary and secondary highways within the district are paved.

CONNECTED TO SERVICES

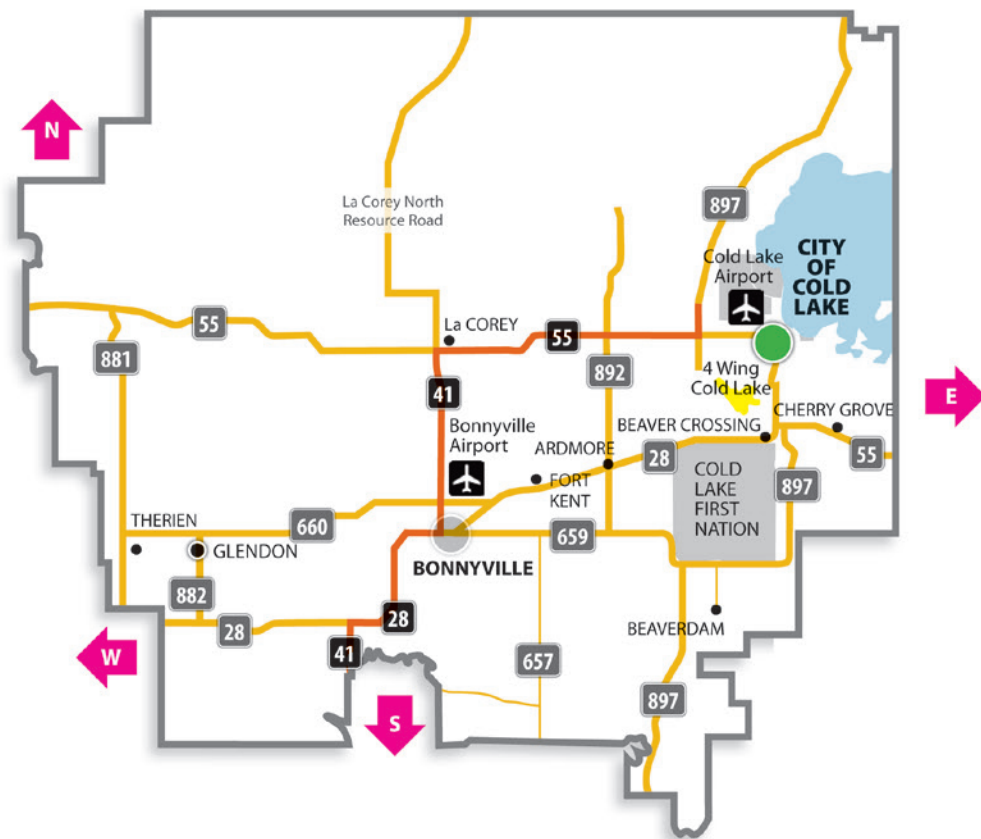
Bonnyville, Cold Lake, and Glendon are major service centres within the M.D. of Bonnyville. They offer a competitive infrastructure, skilled workforce and excellent quality of life for your employees. Services for your business include transportation, communication, engineering, design, consulting, accounting, legal, marketing and computer services. Bonnyville and Cold Lake Airports compliment the excellent highway transportation system.



Regional Railways

The region has railway service by Canadian National Railway (CNR) & Canadian Pacific Railway (CPR). Vermilion, just south of the M.D. on Highway 41, is a terminal point for the CNR, on a secondary main line connecting Edmonton to the west and Saskatoon to the east. The CPR line is located in Lamont County just 61 kilometres east of Vermilion.

Regional partnership



Bonnyville Municipal District

Businesses in the Municipal District of Bonnyville are perfectly situated to access markets to the north and south. Industrial lots are available on Highways 41 and 55 that immediately tie into the transportation hub. The M.D. provides the only access to the major oil and gas facilities on, or around, the Cold Lake Air Weapons Range. The M.D. is continually upgrading municipal roads to accommodate all types of vehicular traffic.

The M.D. of Bonnyville is a member of the Northeast Alberta Information HUB Ltd, also known as "Alberta HUB", a regional economic development alliance that provides information, guidance and tools to businesses and site selectors making investment decisions. The Alberta HUB region features two north-south high load corridors that connect it to markets in the United States and Mexico. The Yellowhead Highway connects the region to tidewater ports in the west, and Canadian and North American markets in the east. In addition, excellent secondary highways, and rail and air assets are available throughout the Alberta HUB region. For more information, please visit: www.albertahub.com



Driving Distances From M.D. of Bonnyville

	Kilometres	Miles
Edmonton	265	165
Calgary	575	357
Vancouver	1,415	879
Winnipeg	1,235	767
Toronto	3,410	2,119
Los Angeles	2,913	1,810
Chicago	2,575	1,600
Houston	3,476	2,160
New York	3,840	2,386

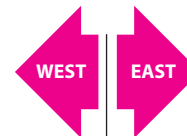
NORTH to
Fort McMurray



SOUTH to
Markets in the
U.S and Mexico



WEST to
Markets in
Alberta and
British Columbia



EAST to
Markets in
Central and
Eastern Canada



TOWN

● HAMLET



HIGH LOAD HIGHWAY



AIRPORT

● VILLAGE

★ OTHER

— HIGHWAY

++++ RAILWAY

Airports

The M.D. of Bonnyville is located approximately 300 kilometres north-east of Edmonton International Airport. Edmonton International Airport is the primary air passenger and air cargo facility in the Edmonton region and is a major hub facility for Northern Alberta and Northern Canada. It is Canada's largest major airport by total land area, the fifth busiest airport by passenger traffic and by aircraft movements.

The two main regional airports that service the district are the Bonnyville Airport in the northwest and Cold Lake Regional Airport, 50 kilometres to the northeast. The Bonnyville Airport is located six kilometres north of Bonnyville on Primary Highway 41, and offers direct flights to Calgary International Airport. Cold Lake Regional Airport is located approximately four kilometres west of the City of Cold Lake. The facility offers service 24 hours per day (weather permitting) and a modern public terminal.



Unique Assets in the Air

Not only do we have two regional airports to service passengers and business. The 4 Wing Cold Lake Air Force base provides the world's largest low fly zone and controlled airspace ideal for the testing of Unmanned Air Vehicle systems.

Connected to energy

The Municipal District of Bonnyville is fortunate to have an array of industry partnerships with utility corporations and oil and gas companies to formulate a workable transportation grid. This is important, as within the M.D. of Bonnyville's boundary there are 18,196 oil wells and drilling continues every year. The M.D. of Bonnyville, the Cold Lake region and its adjoining areas produce about 500,000 barrels of oil per day and that number could rise by another 150,000 by 2017.



One of the M.D. of Bonnyville's biggest assets is the La Corey North Resource Road (an extension of Highway 41). The paved, 50.3 km roadway is the only link into the Cold Lake Air Weapons Range, which is a prime resource site for heavy crude oil; the link to the Cold Lake Oil Sands. On average 2,500 vehicles travel the La Corey

North Resource Road on a daily basis. The M.D. ensures that traffic moves safely during the winter by scheduling a night shift dedicated to keeping the road in good driving condition.

Connected to Major Projects

Imperial Oil Limited's Cold Lake production project is Canada's largest in-situ oil-sands operation producing approximately five per cent of all crude oil produced in Canada. Between 2012 and 2018, it is anticipated \$10.2 billion will have been invested in five major oil sands/in situ projects within the M.D.

Pipelines - Another M.D. of Bonnyville Transportation Asset

In the M.D. there are approximately 560 km of pipelines which carry crude oil, 296 km of pipeline which carry fuel gas and 315 km of pipelines which carry effluent. These pipelines ship over 382,690 bpd of crude oil to refineries. Cenovus recently purchased a \$75 million rail terminal that will allow bitumen from the Cold Lake area to reach more markets.