

Lamont County



Alberta HUB
Where opportunity comes to life

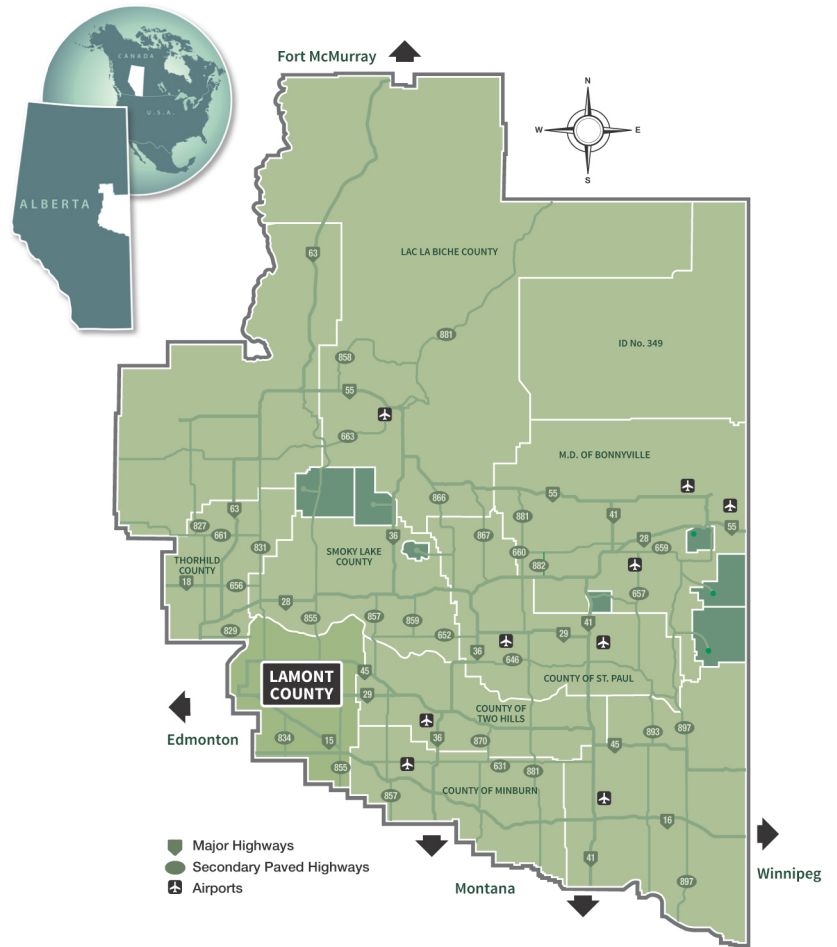


Living in Lamont County



ABOUT LAMONT COUNTY

Lamont County is located in the southwest of the Alberta HUB region. Alberta HUB is a partnership of communities, post-secondary educational institutions and business/industry in northeastern Alberta meant to enhance the quality of life and economic interests of this region. Lamont County is nestled in the Beaver Hills and is proud to boast attractions such as Elk Island National Park, the Ukrainian Cultural Heritage Village, the Basilian Fathers Museum in Mundare and many interesting craft shops, churches and beautiful scenery. Our County is a vibrant and vital community that offers visitors and new residents an unforgettable experience. Lamont County is comprised of 27 townships, which includes 4 hamlets and a total population of approximately 4,000 people.



Lamont County is a member of the Northeast Alberta Information HUB, which is the economic development alliance for Northeast Alberta.





Living in Lamont County



Healthcare

Lamont County has excellent health care services. The Lamont Health Care Centre is a contracted service provider, offering services in acute and continuing care, emergency, surgery, ophthalmology, radiology, rehabilitation, and palliative care. Eleven senior living facilities are available throughout the County. Lamont County also features the Mary Immaculate Health Care Centre in Mundare, which has long term, palliative, and respite care beds.

The County is supported by the Alberta Heartland Primary Care Network (PCN), which serves Fort Saskatchewan, Gibbons, Lamont, Redwater, and the surrounding area.



Education

The Elk Island Public School Board administers five schools in Lamont County including Andrew School (K-9), Bruderheim Elementary (K-6), Lamont Elementary (K-6), Lamont High (7-12), and Mundare School (K-8). Post-secondary education is available from Edmonton-based institutions, which offer distance education and commuting options. The Lamont County Community Adult Learning Council (CALC) provides community-based adult learning.



Housing

Living in the County can be a wonderful experience. The unique landscape and diverse natural elements of Lamont County is what makes it such an attractive place to live. You will find ample, affordable housing in the region, ample services, and a welcoming atmosphere.

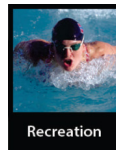
- Century 21 Realty Advisors: 780-640-9444
- Kowal Realty, Mundare: 780-764-4007
- Antoniuk Real Estate Ltd, Mundare: 780-764-3955



Community Services

Lamont County offers a wide variety of services, organizations and clubs that help to support, strengthen and bring our community together. From health, education and social support, to agricultural societies, youth groups and clubs of all varieties, you will find a group or service that will help enrich your life in the community. We have full 911 service and:

- Two ambulances covering the Lamont County region
- Nearby RCMP detachments in Fort Saskatchewan, Two Hills, and Vegreville
- Fire halls are located in Andrew, Bruderheim, Chipman, Lamont, and Mundare
- Family and Community Support Services (FCSS) and Community Adult Learning Council (CALC)



Recreation

Lamont County is proud to boast attractions such as Elk Island National Park, the Ukrainian Cultural Heritage Village, Babas and Borshch Ukrainian Festival and many interesting craft shops, churches and beautiful scenery. The County is known as the "Church Capital of North America" and has produced a booklet containing driving tours of its over 40 churches. Municipalities within Lamont County have recreational facilities including hockey arenas, curling rinks, ball diamonds, tennis courts, a trout fishing pond, and an 18 hole golf course in Mundare. A nine hole golf course can also be found at Elk Island National park.

DEMOGRAPHICS

Population	3,899 (2016 Federal Census)
Families*	1,285
Aggregate Household Income*	\$140,319,085
Average Household Income*	\$81,819

*Source: 2014 Environics Estimates

Contact Us

Lamont County
5303 – 50 Avenue
Lamont, AB T0B 2R0
780-895-2233
www.lamontcounty.ca

