



LLOYDMINSTER



Invest In The City of Lloydminster



The City of Lloydminster is a member of Alberta HUB, the regional economic development alliance of Northeast Alberta, which is the northern region of the Eastern Alberta Trade Corridor



ABOUT THE CITY OF LLOYDMINSTER

Lloydminster is located in the southeast corner of the Alberta HUB region. Alberta HUB is a partnership of municipalities, First Nations, Metis Settlements, post-secondary educational institutions, and business/industry in northeastern Alberta meant to enhance the quality of life and economic interests of this region. The City of Lloydminster holds a place of economic distinction as the 'Heavy Oil Capital of the World' and has long been a manufacturing and value-added destination for the agriculture and oil industries. An ever-growing inventory of national retailers, local boutiques and dining options has helped create a vast retail network in Lloydminster and cemented our community as the midwest service centre. A young median age, range of communities within a 150km radius, and unique border location position Lloydminster for employment and investment success. Come see the opportunities being Canada's only Border City provides investors and residents.

Community Snapshot

Population	31,582 (2021)
Value of all Regional Building Permits	\$149,100,000 (2021)
Non-Residential Mill Rate	12.4 (2022)
Value of Major Projects in the Region	\$2,965,200,000 (2021)

Source: Statistics Canada Census and Alberta Regional Dashboard



Alberta HUB is a Proud Partner of the Eastern Alberta Trade Corridor (EATC)
www.albertahub.com



www.easternalbertatradecorridor.com



LLOYDMINSTER



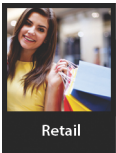
Invest in The City of Lloydminster

OUR TOP INDUSTRIES



Agriculture

Agriculture has a rich history in the Lloydminster region. Wheat, barley and canola account for over 30% of the total acreage sown in the area. Specialty crops such as alfalfa for seed, oats, lentils, field peas and canary seed are also grown. Lloydminster is home to one of Canada's largest canola crushing facilities and largest bio-diesel plant, both owned and operated by ADM.



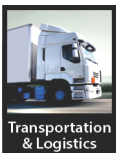
Retail

Stores and services are easily accessible often within only a 7 minute drive. With an estimated trading area of 150,000 people, over 1,400 hotel and motel rooms and a wide range of facilities and parks, Lloydminster is also recognized as an event and meeting destination. Lloydminster has recently welcomed popular stores including Best Buy, Home Depot, HomeSense and Rona.



Oil & Gas

Two significant facilities in the region are Husky Energy Heavy Oil Refinery with an asphalt refinery and the Husky Energy Heavy Oil Upgrader. Most of Husky's oil assets are located in the Lloydminster area, where it holds approximately 2 million acres. Other major oil companies include: Canadian Natural Resources Limited, Devon Energy and Weatherford Canada.



Transportation

Located on the TransCanada Yellowhead Highway and Highway 17, Lloydminster is well-connected coast to coast. Lloydminster Airport is capable of landing a Boeing 737 and is one of only 5 communities in Alberta to have both CN and CP Rail. Near the High Load Corridor of Highway 41, it's part of the Eastern Alberta Trade Corridor, which is linked to the Edmonton-Calgary corridor to the west, Alberta's abundant resources in the northeast, and the U.S. and Mexico to the south.

COMMUNITY STATISTICS

Demographics

	2021 Totals*	2021 %*
Population	31,582	
Median age of the population	35.2	
Total number of census families in private households	8,390	
Total number of private households by tenure	12,090	
Owner	8,115	67.09%
Renter	3,980	32.91%
Average value of dwellings (\$)	\$324,000	
Average income \$	\$58,550	
Average household total income \$	\$110,400	

Labour Force

In the labour force	17,480	72.80%
Participation rate		72.80%
Unemployment rate		11.40%
Management occupations	75	0.31%
Business, finance and administration occupations	2,460	10.25%
Natural and applied sciences and related occupations	875	3.65%
Health occupations	1,185	4.94%
Occupations in education, law and social, community and government services	1,675	6.98%
Occupations in art, culture, recreation and sport	290	1.21%
Sales and service occupations	4,960	20.66%
Trades, transport and equipment operators and related occupations	3,615	15.06%
Natural resources, agriculture and related production occupations	1,020	4.25%
Occupations in manufacturing and utilities	790	3.29%

Education

High school diploma or equivalent	7,820	32.58%
Postsecondary certificate, diploma or degree	12,005	50.01%
Apprenticeship or trades certificate or diploma	2,710	11.29%
College, CEGEP or other non-university certificate or diploma	4,880	20.33%
University certificate or diploma below bachelor level	700	2.92%
University certificate, diploma or degree at bachelor level or above	155	0.65%

*Source: 2021 Statistics Canada Census

SITE SELECTION INFORMATION

Electrical Provider(s)	Atco Electric; Direct Energy; ENMAX
Electrical Capacity	Atco Electric; Ph. (780) 420-7310
Natural Gas Provider(s)	Atco Gas; Direct Energy; ENMAX
Natural Gas Capacity	Atco Gas; Ph. (306) 825-3336
Water Capacity	Lloydminster, Water Services; Ph. (780) 875-6184
Waste/Sewage Capacity	Lloydminster, Wastewater Collection; Ph.(780) 874-3700
Broadband Provider(s)	Shaw; Bell; Telus
Broadband Capacity	Up: To 100 Mb/s; Down: To 250 Mb/s



Contact Us

City of Lloydminster
4420 50 Avenue,
Lloydminster, AB/SK, T9V 0W2
Ph. 780-875-6184

www.lloydminster.ca

Alberta HUB



www.albertahub.com