



Alberta HUB
Where opportunity comes to life

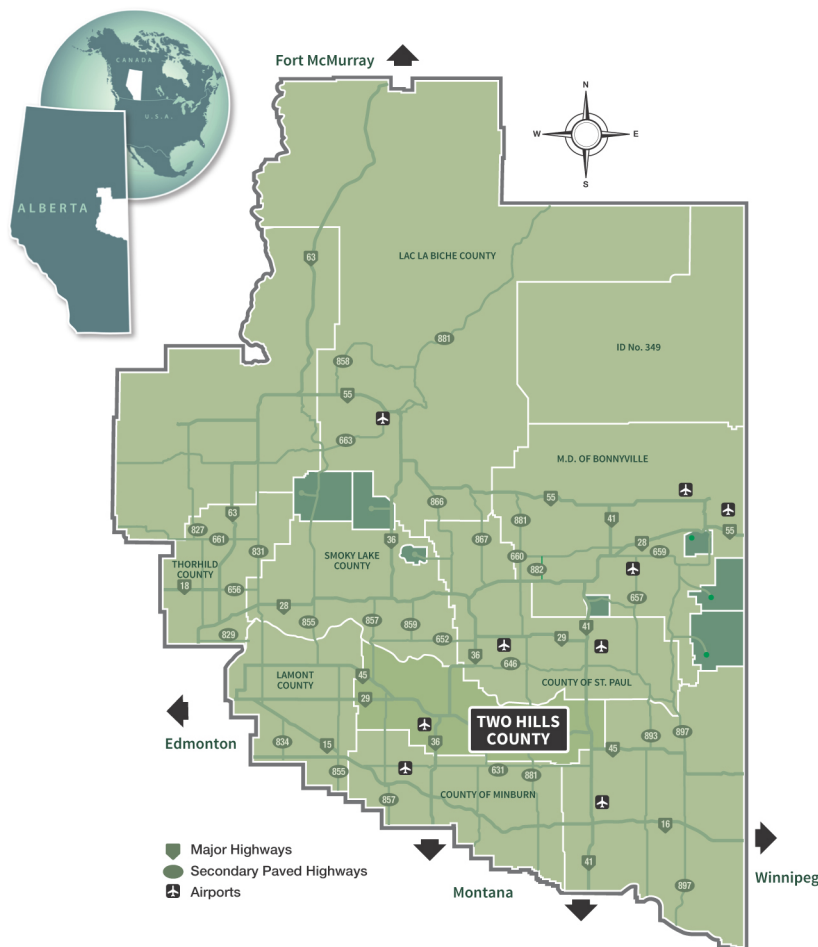


Living in The County of Two Hills



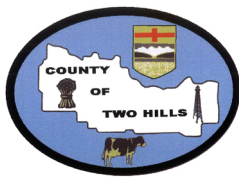
ABOUT THE COUNTY OF TWO HILLS

The County of Two Hills is located in the center of the Alberta HUB region. The Alberta HUB is a partnership of communities and post-secondary educational institutions and business/industry in northeastern Alberta meant to promote the quality of life and highlight the economic opportunities of the region. The County of Two Hills covers roughly 2,700 square km, and is strategically located with Highways 36 and 41 (High Load Corridors) running north and south. The North Saskatchewan River parallels the north border of the County, providing much of the area with valleys and rolling hills ideal for recreation. The County is dedicated to achieving excellence in leadership, growth, communication and services to their taxpayers and residents. This is delivered by providing the best quality municipal services through a democratic and responsive process that recognizes and balances the diversity of its people, land and economic resources on behalf of the entire municipality.



The County of Two Hills is a member of the Northeast Alberta Information HUB, the regional economic development alliance of Northeast Alberta.





Living in The County of Two Hills



Healthcare

The County of Two Hills has excellent health care facilities including the Two Hills Health Centre with services in acute and continuing care, emergency, palliative care, rehabilitation, diagnostic and therapeutic services, radiology and more. Residents also have access to the Myrnam Health Clinic and neighboring health care services at:

- St. Paul Therese Health Centre (St. Paul)
- St. Joseph's General Hospital (Vegreville)



Education

The County of Two Hills offers a wide range of educational options from daycare to post-secondary:

- Public: Schools (K-12) are available in Two Hills and Myrnam.
- Separate: Separate school education is available in Vegreville at St. Martins.
- Post-Secondary Education: Portage College (St. Paul, Lac La Biche), University Blue Quills, Lakeland College (Vermilion).



Housing

The County of Two Hills has a number of beautiful communities. You will find ample, affordable housing and services in the region, and a welcoming atmosphere.

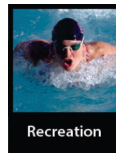
- Century 21 Vegreville: 780-632-7700
- Century 21 Poirier Real Estate: 780-645-4535
- Coldwell Banker Cartier Realty: 780-645-6070
- Dale Real Estate: 780-645-3741
- Elk Point Realty: 780-724-4777



Community Services

There are a wide variety of shopping and community services available in the communities of the County of Two Hills. Emergency services include:

- Five Volunteer Fire Departments that provide fire protection and emergency rescue unit services.
- An RCMP detachment in the Town of Two Hills.
- Ambulance services provided by Prairie Emergency Medical Systems Inc.



Recreation

County of Two Hills features historic sites including the Romanian Pioneer Museum of Boian and numerous recreational opportunities such as:

- Golfing: Two Hills Lions Golf and Country Club, Myrnam Derwent Golf and Country Club.
- Jackfish Lake/J Dudar Park near Myrnam, Sandy Lake Park west of Two Hills. Lac Sante provides great family fun.
- Geleta Park in Two Hills: sports fields, rodeo grounds, community centre.
- North Saskatchewan River with a boat launch at Duvernay and Desjarlais Crossing offers canoeing, kayaking, fishing and breathtaking scenery.
- Winter activity includes snowmobiling (Myrnam River Ridge Riders Snowmobile Club/ Lakeland Breakers Snowmobile Club) with great trails for all ages.

DEMOGRAPHICS

Population	3,322 (2016 Federal Census)
Families*	862
Aggregate Household Income*	\$70,479,329
Average Household Income*	\$64,365

*Source: 2014 Environics Estimates



Contact Us

County of Two Hills
P.O. Box 490, 4818 - 50 Avenue
Two Hills, AB. T0B 4K0
780-657-3358
www.thcounty.ab.ca

Alberta HUB



www.albertahub.com