



Alberta HUB
Where opportunity comes to life

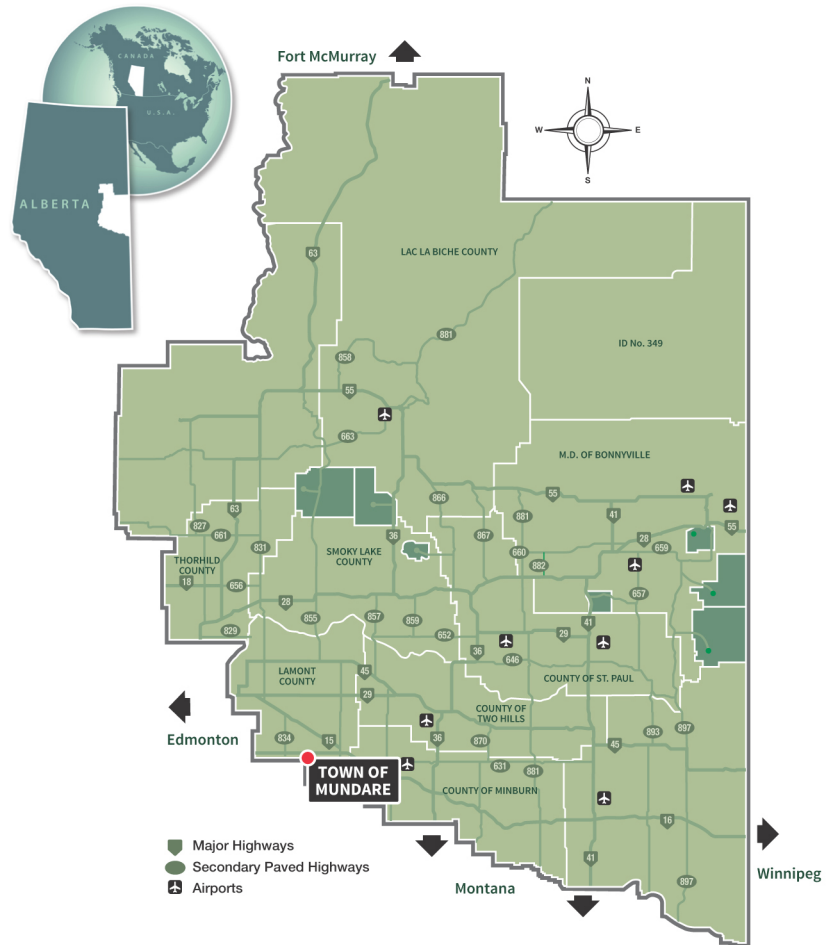


Living in The Town of Mundare



ABOUT THE TOWN OF MUNDARE

Mundare is located in the southwest of the Alberta HUB region. Alberta HUB is a partnership of communities, post-secondary educational institutions and business/industry meant to enhance the quality of life and economic interests of the region. Mundare, located just off Highway 16 on the intersection of Highways 15 and 855, is a strong and vibrant community with everything you need for you and your family: K-8 school, daycare centre, library, businesses and recreational facilities, as well as the Basilian Fathers museum that contains many unique artifacts. The economy is based on agriculture and related businesses. We are famous for Ukrainian Home-Made Style Sausage produced by Stawnichy's Meat Processing, and home to the World's Largest Ukrainian Sausage! Located within easy commuting distance of the Industrial Heartland, Vegreville, and Edmonton, Mundare is a quiet, small town that is great to live and raise a family.

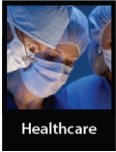


The Village of Mundare is a member of the Northeast Alberta Information HUB, which is the regional economic development alliance of Northeast Alberta.





Living in The Town of Mundare



Healthcare

Mundare boasts a compounding pharmacy and a chiropractor. Mundare residents have easy access to hospitals in Vegreville and Lamont. St. Joseph's General Hospital in Vegreville is an active treatment facility and offers diagnostic services, rehab services, cardiac stress testing, dialysis unit and home monitoring.



Education

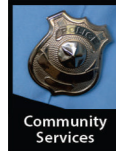
Mundare has a child development centre for pre-schoolers, daycare and a K-Eight school. High school students are currently bussed to Vegreville, 20 minutes away. Vegreville schools have an outstanding reputation for achievement in French, with classes starting in Grade One, as is true for the Ukrainian bilingual program. For post-secondary education, there are numerous options in the Edmonton area.



Housing

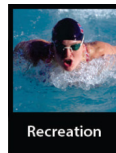
Attainable housing options are plentiful in a town with downtown revitalization and architectural guidelines, quality streets, sidewalks and utility systems. A number of golf course lots are available for purchase. Local realtors are ready to assist you:

- Century 21 Realty Advisors – 780-895-7777
- Antoniuk Realty – 780-895-2442
- Kowal Realty – 780-764-4007



Community Services

Mundare has a variety of local volunteer organizations carrying out activities in the community, including an active volunteer fire department, restaurants and a full range of stores, restaurants, service businesses and recreational facilities. These include a grocery store, pharmacy, registry, hairdressers, bakery, banks, pub and liquor store, gift shop, the ever popular Stawnichy Meat Processing, and the Chicken Coop (a hub for quilters from near and far). Police service is from the RCMP detachment in Vegreville.



Recreation

Mundare boasts a variety of recreational and leisure opportunities for people of all ages. The very active Seniors' Centre provides a great place for the 55+ crowd to meet. The Whitetail Crossing Golf Club, with 18 holes, practice range, pro shop and lounge, provides a challenge for all levels of golfer. The hockey arena, curling club, ball diamonds, playgrounds (including a spray park and a skateboard park) and Basilian Fathers Museum provide a range of recreational options for residents and visitors. Nearby Elk Island National Park has facilities for hiking, camping, and a nine-hole golf course with lounge and dining area. Mundare hosts numerous events throughout the year that attract and entertain both visitors and residents alike.

DEMOGRAPHICS

Population	852 (2016 Federal Census)
Families*	260
Aggregate Household Income*	\$24,649,878
Average Household Income*	\$67,906

*Source: 2014 Environics Estimates



Contact Us

Town of Mundare
PO Box 348
Mundare, AB. T0B 3H0
780-764-3929

www.mundare.ca

Alberta HUB



www.albertahub.com